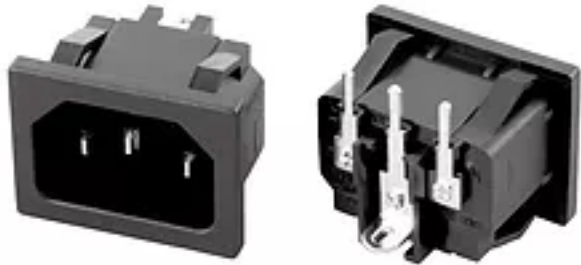


R-301SN (12B)



Standard: IEC 60320 C14

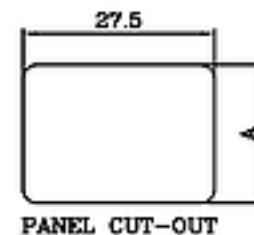
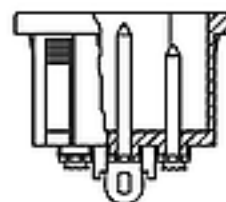
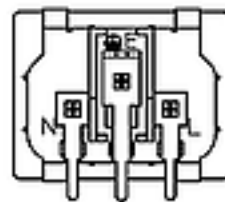
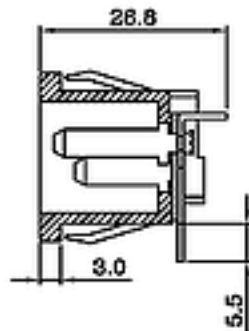
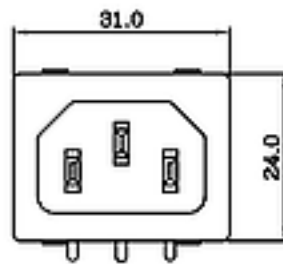
Rating: 15A 250V AC / 10A 250V AC

Insulation Resistance: 100M Ω 500V DC/1 minute

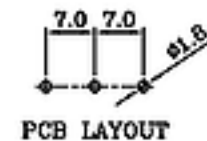
Dielectric Strength: 2000V AC/1 minute

Housing Material: Thermoplastic 94V-2~V-0

Dimensions



THROTTLE	A
0.8t-1.0t	19.8
1.0t-1.2t	19.9
1.2t-1.5t	19.9
2t	20.0
3.5t	20.1



PCB LAYOUT